

STANDARD GROUND TAXI PROCEDURES

- General
 - Departing IFR flights shall contact JEJU DELIVERY(121.925 MHz) to obtain ATC clearance at least 10 minutes prior to ETD and shall obtain push-back clearance and taxi instruction from JEJU GROUND(121.675 MHz).
 - TWY E3 not available for aircraft with a wingspan of 118 ft (36 m) or longer.

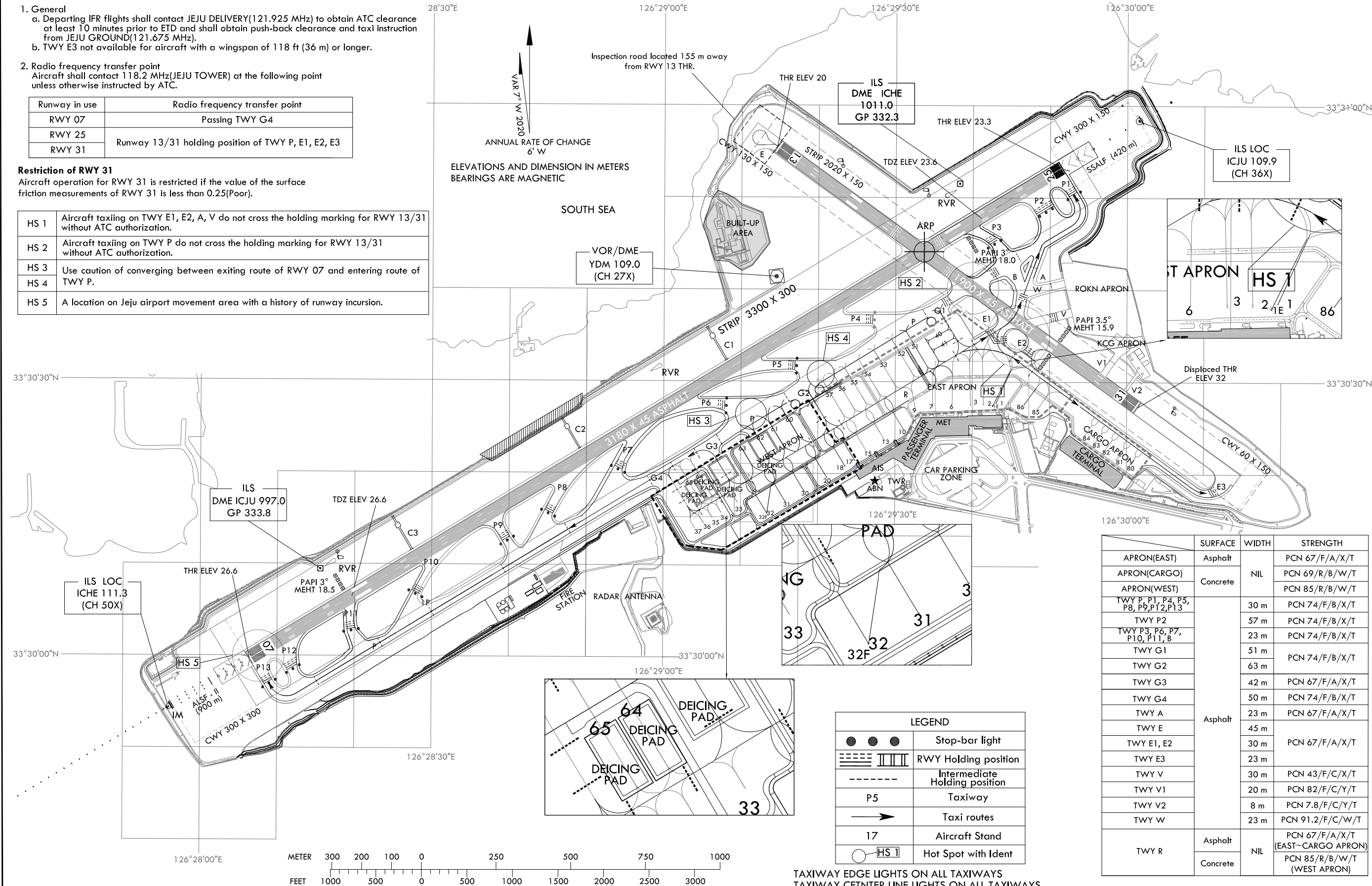
- Radio frequency transfer point
Aircraft shall contact 118.2 MHz(JEJU TOWER) at the following point unless otherwise instructed by ATC.

Runway in use	Radio frequency transfer point
RWY 07	Passing TWY G4
RWY 25	Runway 13/31 holding position of TWY P, E1, E2, E3
RWY 31	

Restriction of RWY 31

Aircraft operation for RWY 31 is restricted if the value of the surface friction measurements of RWY 31 is less than 0.25(Poor).

HS 1	Aircraft taxiing on TWY E1, E2, A, V do not cross the holding marking for RWY 13/31 without ATC authorization.
HS 2	Aircraft taxiing on TWY P do not cross the holding marking for RWY 13/31 without ATC authorization.
HS 3	Use caution of converging between exiting route of RWY 07 and entering route of TWY P.
HS 4	
HS 5	A location on Jeju airport movement area with a history of runway incursion.



	SURFACE	WIDTH	STRENGTH
APRON(EAST)	Asphalt	NIL	PCN 67/F/A/X/T
APRON(CARGO)	Concrete		PCN 69/R/B/W/T
APRON(WEST)			PCN 85/R/B/W/T
TWY P, P1, P4, P5, P8, P9, P12, P13	Asphalt	30 m	PCN 74/F/B/X/T
TWY P2		57 m	PCN 74/F/B/X/T
TWY P3, P6, P7, P10, P11, B		23 m	PCN 74/F/B/X/T
TWY G1		51 m	PCN 74/F/B/X/T
TWY G2		63 m	
TWY G3		42 m	PCN 67/F/A/X/T
TWY G4		50 m	PCN 74/F/B/X/T
TWY A		23 m	PCN 67/F/A/X/T
TWY E		45 m	PCN 67/F/A/X/T
TWY E1, E2		30 m	
TWY E3		23 m	
TWY V		30 m	PCN 43/F/C/X/T
TWY V1		20 m	PCN 82/F/C/Y/T
TWY V2	8 m	PCN 7.8/F/C/Y/T	
TWY W	23 m	PCN 91.2/F/C/W/T	
TWY R	Asphalt	NIL	PCN 67/F/A/X/T (EAST-CARGO APRON)
	Concrete		PCN 85/R/B/W/T (WEST APRON)

LEGEND	
● ● ●	Stop-bar light
▬ ▬ ▬	RWY Holding position
- - - -	Intermediate Holding position
P5	Taxiway
→	Taxi routes
17	Aircraft Stand
○ HS 1	Hot Spot with Ident

TAXIWAY EDGE LIGHTS ON ALL TAXIWAYS
TAXIWAY CENTER LINE LIGHTS ON ALL TAXIWAYS
(except : E, E2, E3, V, V1, W)

STANDARD GROUND TAXI PROCEDURES

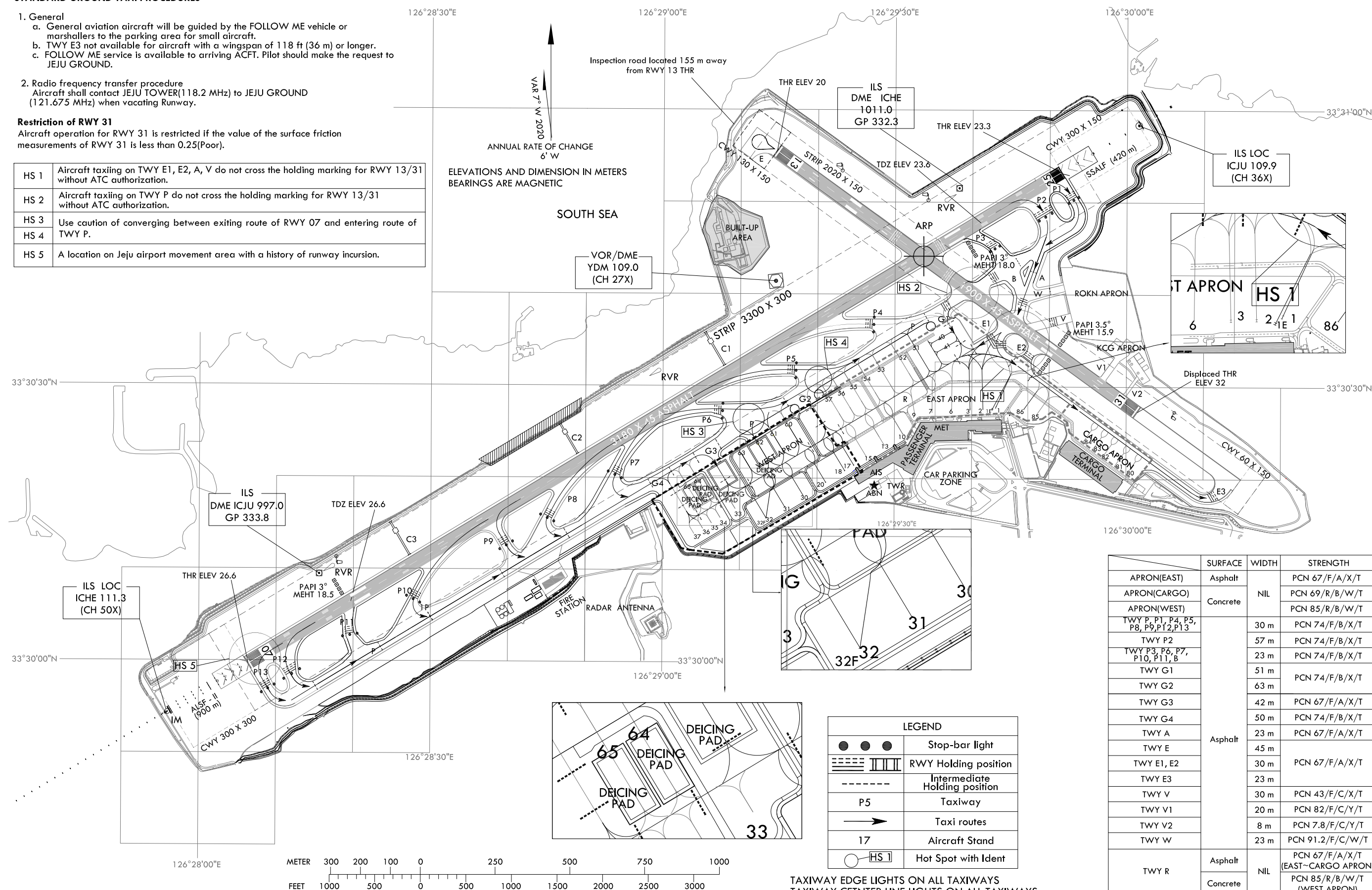
1. General
 - a. General aviation aircraft will be guided by the FOLLOW ME vehicle or marshallers to the parking area for small aircraft.
 - b. TWY E3 not available for aircraft with a wingspan of 118 ft (36 m) or longer.
 - c. FOLLOW ME service is available to arriving ACFT. Pilot should make the request to JEJU GROUND.
2. Radio frequency transfer procedure

Aircraft shall contact JEJU TOWER(118.2 MHz) to JEJU GROUND (121.675 MHz) when vacating Runway.

Restriction of RWY 31

Aircraft operation for RWY 31 is restricted if the value of the surface friction measurements of RWY 31 is less than 0.25(Poor).

HS 1	Aircraft taxiing on TWY E1, E2, A, V do not cross the holding marking for RWY 13/31 without ATC authorization.
HS 2	Aircraft taxiing on TWY P do not cross the holding marking for RWY 13/31 without ATC authorization.
HS 3	Use caution of converging between exiting route of RWY 07 and entering route of TWY P.
HS 4	
HS 5	A location on Jeju airport movement area with a history of runway incursion.



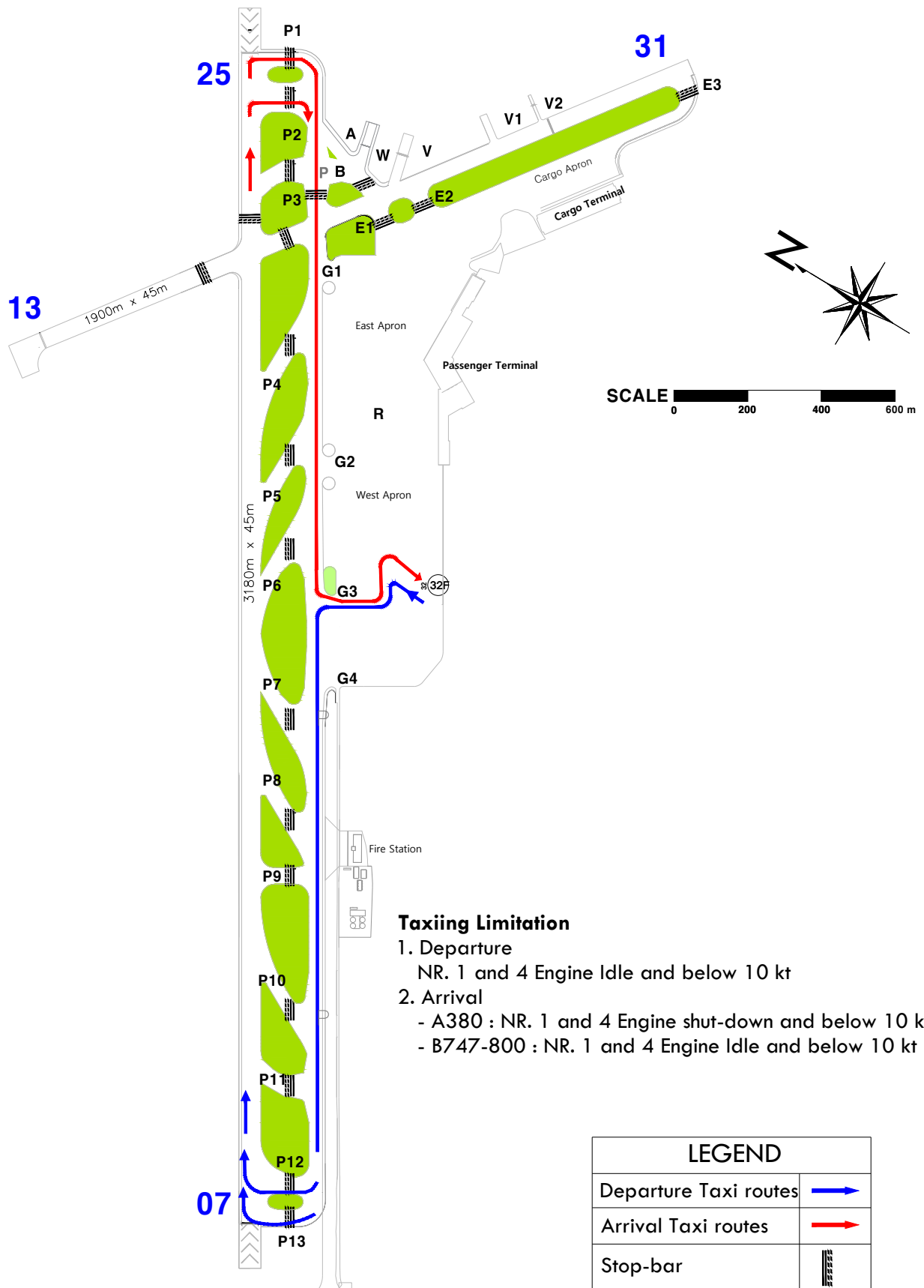
TAXIWAY EDGE LIGHTS ON ALL TAXIWAYS
TAXIWAY CENTER LINE LIGHTS ON ALL TAXIWAYS
(except : E, E2, E3, V, V1, W)

	SURFACE	WIDTH	STRENGTH
APRON(EAST)	Asphalt		PCN 67/F/A/X/T
APRON(CARGO)	Concrete	NIL	PCN 69/R/B/W/T
APRON(WEST)			PCN 85/R/B/W/T
TWY P, P1, P4, P5, P8, P9, P12, P13			30 m
TWY P2	Asphalt	57 m	PCN 74/F/B/X/T
TWY P3, P6, P7, P10, P11, B		23 m	PCN 74/F/B/X/T
TWY G1		51 m	PCN 74/F/B/X/T
TWY G2		63 m	
TWY G3		42 m	PCN 67/F/A/X/T
TWY G4		50 m	PCN 74/F/B/X/T
TWY A		23 m	PCN 67/F/A/X/T
TWY E		45 m	PCN 67/F/A/X/T
TWY E1, E2		30 m	
TWY E3		23 m	
TWY V		30 m	PCN 43/F/C/X/T
TWY V1		20 m	PCN 82/F/C/Y/T
TWY V2		8 m	PCN 7.8/F/C/Y/T
TWY W		23 m	PCN 91.2/F/C/W/T
TWY R		Asphalt	NIL
	Concrete	PCN 85/R/B/W/T (WEST APRON)	

JEJU TWR 118.2
JEJU GND 121.675

"F" aircraft Available taxi route - RWY 07 IN USE

Available only for Code Letter "F" Aircraft

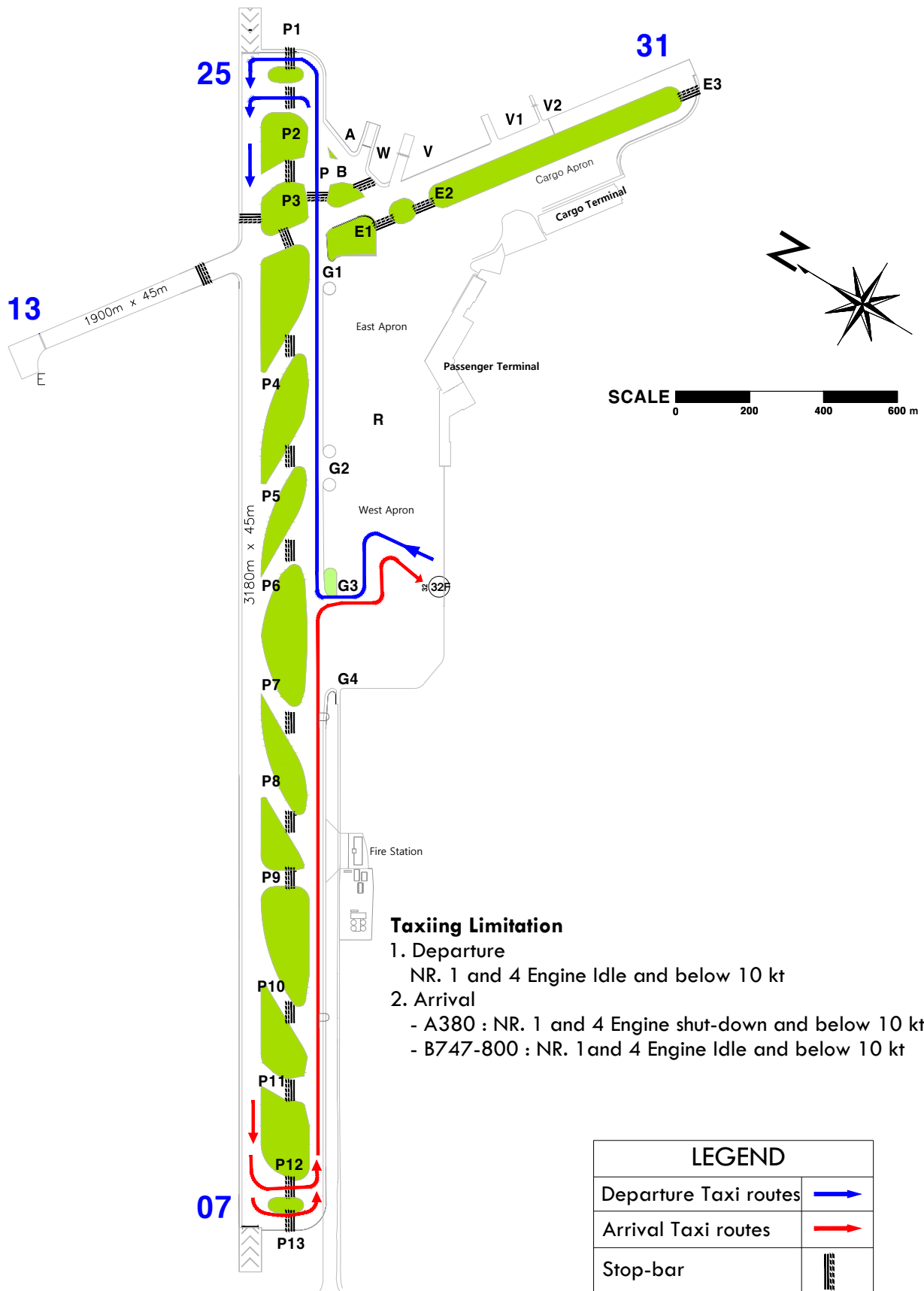


Change : Information of GND frequency(121.65 MHz → 121.675 MHz).

JEJU TWR 118.2
JEJU GND 121.675

"F" aircraft Available taxi route - RWY 25 IN USE

Available only for Code Letter "F" Aircraft



Change : Information of GND frequency(121.65 MHz → 121.675 MHz).